



Ironstone Road  
Chase Terrace, Burntwood



# Ironstone Road

## Chase Terrace



Lovett&Co. Estate Agents are pleased to offer for sale this spacious, traditional two bedroom end terrace house. Being offered with NO CHAIN.

On the ground floor the property offers: two spacious reception rooms, modern kitchen, rear lobby and family bathroom. Upstairs are two double bedrooms

Externally the property benefits from a parking for two vehicles and a private rear garden ideal for entertaining.

The property has recently been re-decorated throughout and benefits from new flooring, new insulated loft and new roof.

The property is well placed to take full advantage of local shopping facilities available at Swan Island, together with a range of further facilities including doctors surgery, superstore, good local schooling, and excellent leisure facilities. Commuter benefits include A5, A38 and the M6 toll Road linking the Midlands Motorway network, and there are both Cross and Inter City railway lines available from Lichfield Cathedral City with its tourist links and Garrick Theatre, being approximately 4 miles away.

### LOUNGE:

3.43m x 3.46m

Front entrance door, carpeted flooring, built in shelving, TV & phone sockets, coving, ceiling light point, window to front and doorway to

small hallway with storage cupboard and further doorway to the dining room.

### DINING ROOM:

3.62m x 3.43m

Carpeted flooring, coving, ceiling light point, radiator, windows to rear and side, door to stairs to first floor and door to kitchen.

### KITCHEN:

2.46m x 4.0\*m

Range of matching wall and base units incorporating stainless steel sink and drainer unit, space for oven and further appliances, cupboard housing combination boiler, coving, tiled flooring, tiled splash backs, radiator, two windows to side and door to lobby and door to bathroom.

### FAMILY BATHROOM:

White suite comprising: bath with shower over, pedestal wash hand basin, W/C, tiled flooring, ceiling light point and window to rear.

### FIRST FLOOR LANDING:

Carpeted flooring, ceiling light point, doors off to two bedrooms and access to loft.

### MASTER BEDROOM:

3.67m x 3.49

Carpeted flooring, radiator, ceiling light point and window to front.

### BEDROOM TWO:

3.70m x 3.48m

Carpeted flooring, two built in storage cupboards, ceiling light point, radiator and window to rear.





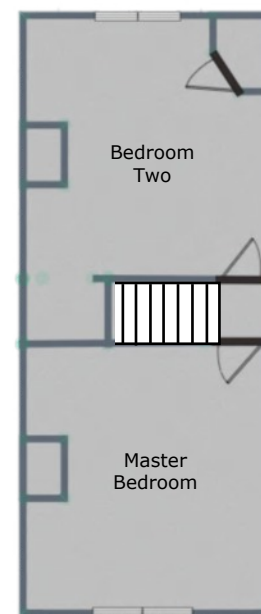
### VIEWING:

Please contact us on 01543 889410 if you would like to arrange a viewing appointment for this property or require further information.

### DISCLAIMER:

These particulars are set up as a general outline only for the guidance of intending purchasers or lessees, and do not constitute part of an offer

or contract. The sellers has given permission for all descriptions, dimensions, references to conditions, tenure, service charges and necessary permissions for use, occupation and other details to be used and we have taken them in good faith whether included or not & whilst we believe them to be correct, any intending purchasers or tenants should not rely on them as representations or fact but must satisfy themselves by inspection or otherwise as to the correctness of each of them and have this certified during the conveyancing by their solicitor. No person in the employment of Lovett&Co has any authority to make or give any representation or warranty whatsoever in relation to this property.



FOR ILLUSTRATIVE PURPOSES ONLY, NOT TO SCALE



